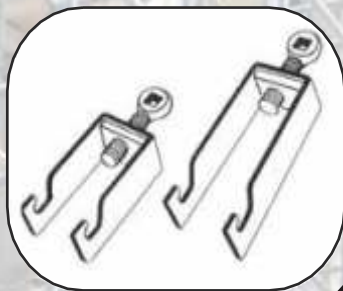




# IshiconEngineering

..Concrete supporters



**Ishicon Engineering** is company which specializes in manufacturing and marketing of a wide range of steel centering & scaffoldings, Aluminium formwork throughout the country.

We believe that success is not a point, indeed; it's a series of process that inculcates all the latest developments prevailing in industry. Keeping this in mind, we make extensive research work at regular intervals so that our clients get the latest and upbeat range of scaffolding, Formwork products.

## **Manufacturing**

Our capacious Manufacturing is a very significant part of our infrastructure. All the construction support equipment's are stored in protected environment in the Factory. Which is well looked after by a competent inventory management system. Movement of the Material from the manufacturing unit to the Site, and our key skill to tracked potential requirements form site to avoid any kind of urgency which delays site execution work. Our packaging unit takes utmost precaution to give the products damage free packaging suitable for transportation to end destination.

## **Mission**

Our mission is to market our quality product by creating awareness among contractors and educating them about all technical parameters of our products. Our commitment to customers is to manufacture good quality product at economical cost and provide reliable services at all times.

### **Clients Satisfaction**

Repeat business is the lifeline of our business and we work hard to achieve high rates of customer satisfaction; from the comprehensive and high quality services through the pro- active support and cost effective pricing.

We endeavour to produce products of the highest quality

**“ On Time “ “ All The Time”**

# ALUMINIUM FORMWORK SYSTEM

Item: Concrete formwork, modular aluminium formwork

Material: 6061-T6 aluminium alloy

Thickness of Material: 4mm

Type: Flat formwork, corner formwork, beam formwork, etc.

Formwork Weight: 17-20kg / sq-mtr

Thickness of Formwork: 65mm

Safe Working Load: 60kN/m<sup>2</sup>

Cycle Times: ≥300

Shape: Rectangular, customized

Size: 0.5m-11.85m, non-standard: custom-made as your requirement

Process: Bending, welding, precise cutting, punching, etc.

Package: Standard pallet with waterproof film, or according to your requirement.

Aluminium formwork is a construction system for forming cast in place concrete structure of a Building.

Auto formwork system provides aluminium formwork for RCC, load-bearing, multi-storeyed buildings and enables the walls and slab to be poured in the same operation. This increases efficiency, and also produces an extraordinarily strong structure with excellent concrete finish.

## What is Aluminium Formwork?

Aluminium formwork manufacturing uses panels that are made from high strength Aluminium alloy.

The panels are held in position by a simple pin and wedge arrangement system.

The panel fits precisely, securely and requires no bracing.

It has sections that are large enough to be effective, yet light enough in the weight to be handled by a single worker.

Aluminium Formwork System is a construction system for forming cast in place concrete structure of a building. It is also a system for scheduling and controlling the work of other construction trades such as steel reinforcement, concrete placement and mechanical and electrical conduits.

The System is fast, simple, adaptable and very cost effective. It is unique because it forms all of the concrete in a building including walls, floor slabs, columns, beams, stairs, window hoods, balconies and various decorative features in exact accordance with the architects' design. The dimensional

accuracy of the concreted work also results in consistent fittings of doors and windows. The smooth-off form finish of the concrete eliminates the need for costly plastering.

Unlike other construction systems, Formwork Systems of Aluminium forms can be erected by unskilled labour and without the need for hoisting cranes. The largest panel weighs not more than 25 kgs which means it can be handled by a single worker.

## MONOLITHIC SYSTEM

Ishicon Engineering aluminium formwork system allows building for monolithic and /or 2 stages casting application to suit all kinds of building requirements.

## Aluminium Panels-Extruded Sections

Our panels are all extruded sections by high pressure pressers thus giving the toughness strength required by construction need. They are mechanically linked together -not ONLY from welding

## Advantages

The Formwork is specifically designed to allow rapid construction on all types of architectural layouts. Total system forms the complete concrete structure Custom designed to suit project requirements

Unsurpassed construction speed High quality finish Cost effective for mass production

Panels can be reused over 200 times

Erected using unskilled labour

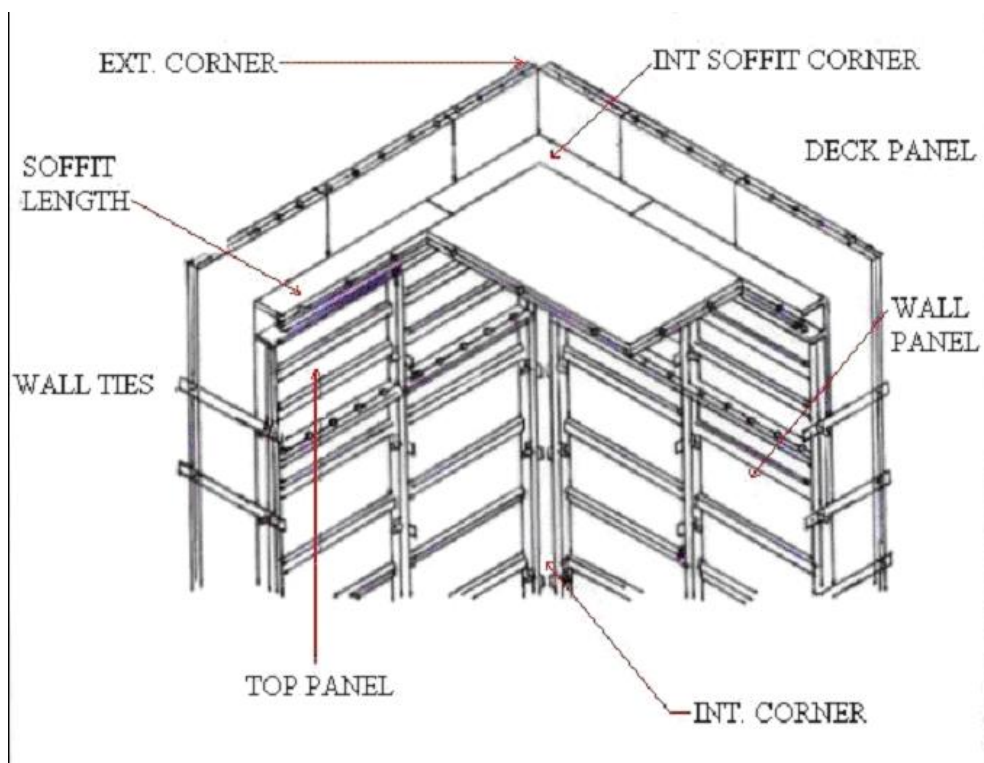
Light weight, easy to handle

Low waste

The simplicity of Aluminium Formwork and the repetitive nature of the assembly process make it possible to accurately programme construction sequences and thus cycle times well in advance. In addition this enables unskilled labour to work with the Formwork therefore reducing the burden on skilled labour when this is in short supply.

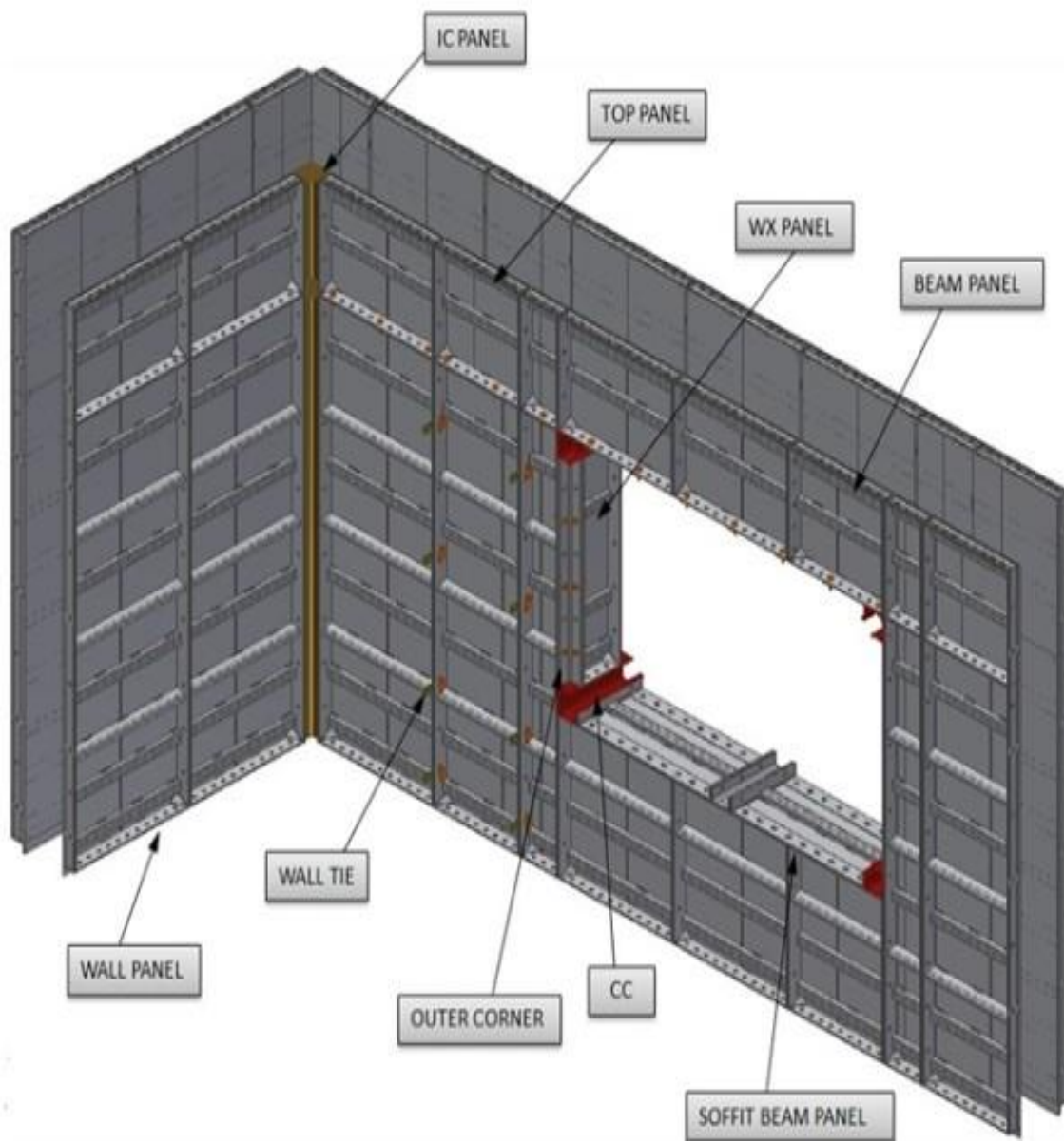
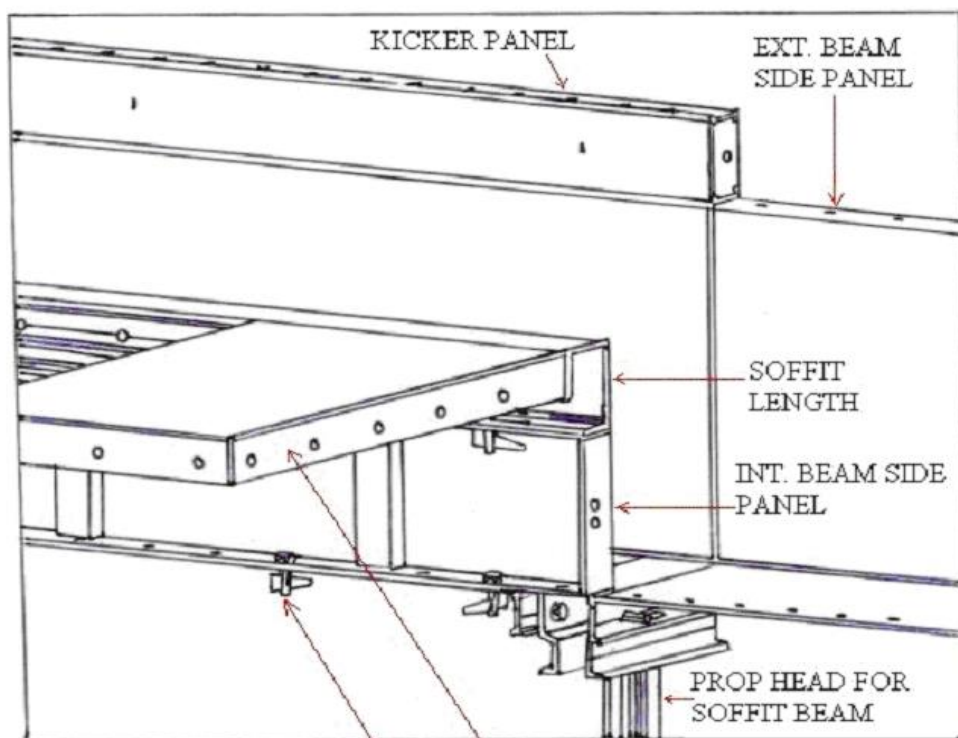
On leaving the factory all panels are clearly labelled to ensure that they are easily identifiable on site and can be smoothly fitted together using the formwork modulation drawings.

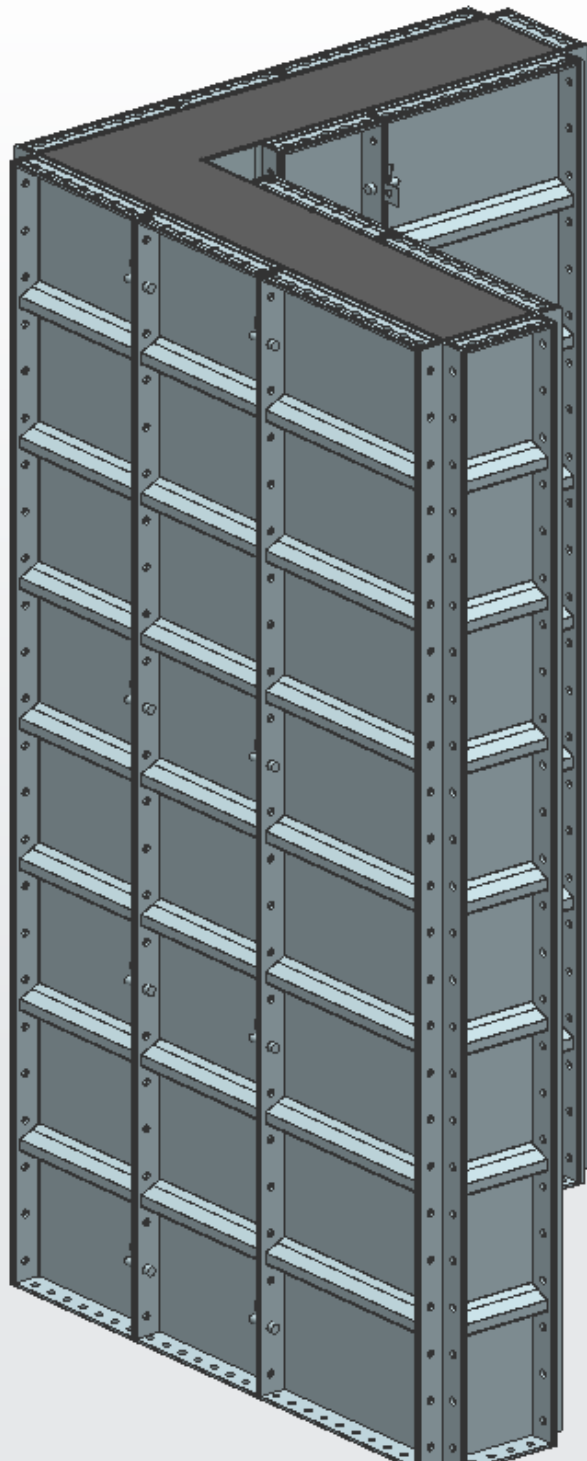
- ✓ We provide up to 600mm Width Aluminium Panels.
- ✓ Our Average System (only aluminium Components)
- ✓ Weigh 20 kg/sqm Stiffeners for best support.
- ✓ We have 4mm thick panels for best results.
- ✓ We use 6061 T6 grade aluminium in our products as it is structurally
- ✓ Stronger, lighter and durable than any other grade.
- ✓ Our welding free panels use minimum pins and wedges for superior
- ✓ And clean structure.
- ✓ At Ishicon, highly automated machine are used for cutting, punching, holing, milling, buffing and lacquering.
- ✓ We assure speedy delivery time to match your requirements schedule.



Wall Assembly Details







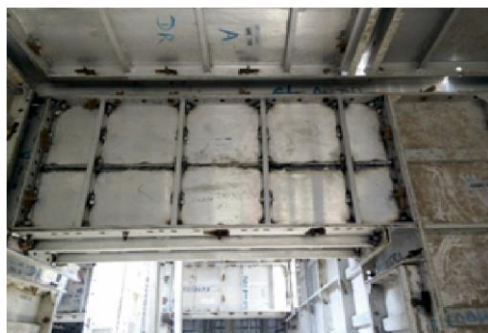
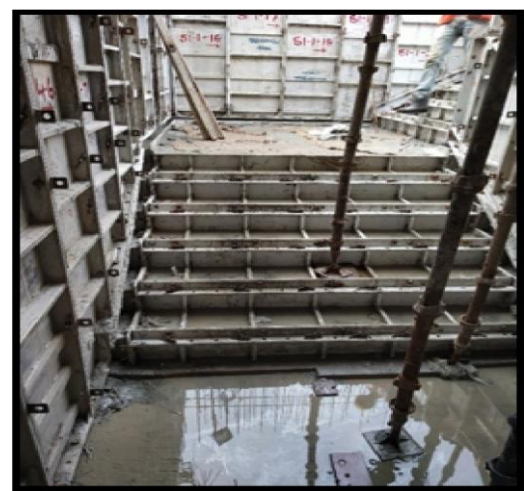


**AFTER**



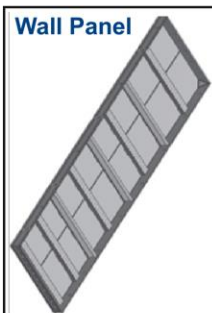
**BEFORE**











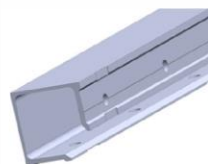
**Wall Panel**

Classification Contents	
Material	: Aluminium Grade-6061 T6
Wall Panel	
Basic Panel	: 600(w) x 2050, 2400 Long
	450(W) X 2050 , 2400 Long
	300(W) X 2050 , 2400 Long
Accessories	: Stub Pin , Steel Wedges , Wall Ties, Sleeves

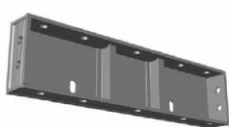
**Wall End Panel**



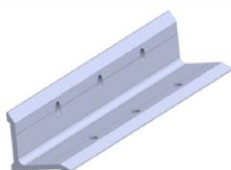
**IN – CORNER (IC)**



**Kicker Panel**



**External Corner**



**Beam Panel**



**Rocker**



**Deck Panel**

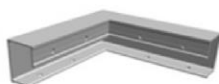


Classification Contents	
Material	: Aluminium Grade-6061 T6
Deck Panel	
Basic Panel	: 600(w) x 1200, 1100, 1000 Long
	450(w) x 1200, 1100, 1000 Long
Accessories	: Stub Pin, Steel Wedges,
	Prop Head, Props, Slab Soffit

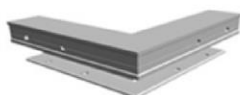
**Beam Soffit Panel (BS)**



**Slab In Corner**



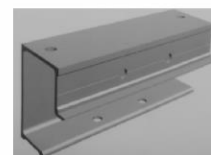
**Slab Outer Corner**



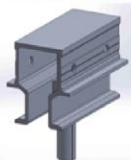
**Slab Length (SL)**



**Beam Slab Length**



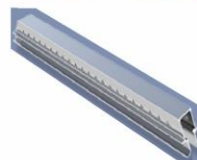
**Prop Head (PH)**



**End Beam (EB)**

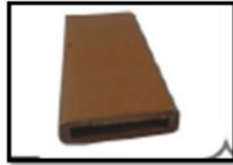


**Middle Beam (MB)**



**Beam BAR**



**M.S. (Props) Support****M.S. Wall Bracket****M.S. Lift Bracket****M.S. Slab Bracket****Wall Tie****PVC Sleeve****Pins & Wedges****Waller Clamp****Alignment Clamp****Comparison of Various Formworks Economic Indicator**

ITEM	WOOD FORMWORK	STEEL FORMWORK	ALUMINUM FORMWORK
Material	12-18 mm thickness Wood	3-4 mm thickness Steel	4 mm thickness Aluminum Profile
Thickness (MM)	12-18	55	65
Weight (Kg/Sqm)	10 to 12	35 to 40	20 to 25
Loading (Kn/m2)	25 to 30	30 to 50	50 to 70
Cycle Times	5 to 8	50 to 70	100 to 120
Cost	LOW	MEDIUM	HIGH
Recovery Value	No recovery Value	Medium	High



# Ishicon Engineering

Address: Sr. No. 34/2, Swapnapurti, Shivshambho Nagar, Lane No. 3, Katraj - Kondhwa Road, Katraj, Pune - 411046, India

Phone: +91 94220 21380 / 90223 38326 / 88060 24897

Email: [sales@ishiconengineering.com](mailto:sales@ishiconengineering.com)

[www.ishiconengineering.com](http://www.ishiconengineering.com)